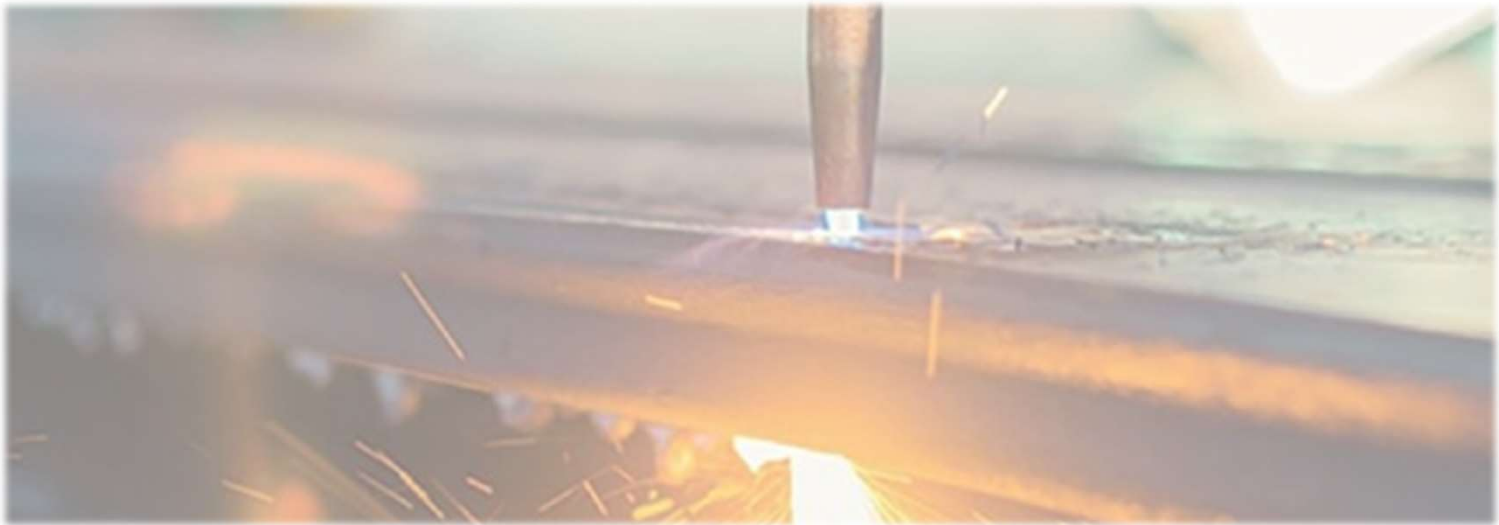


CATALOG PLASMA CUTTING 2024



PRODUCED IN CZECH REPUBLIC - EUROPE



INDEX - BEST SELLING SPARE PARTS FOR

	PAGE
PLASMA CUTTING EQUIPMENT FOR THE AJAN® system HP130-260®	3
PLASMA CUTTING EQUIPMENT FOR THE ESAB/L-TEC® system PT-36®	4
PLASMA CUTTING EQUIPMENT FOR THE HYPER THERM® system POWERMAX® 1000/1250/1650	5
PLASMA CUTTING EQUIPMENT FOR THE HYPER THERM® system POWERMAX® 45 (for OEM torch)	6
PLASMA CUTTING EQUIPMENT FOR THE HYPER THERM® system POWERMAX® 65/85/105 (for OEM torch)	7
PLASMA CUTTING EQUIPMENT FOR THE HYPER THERM® system POWERMAX® 65/85/105 (for TECMO torch)	8
PLASMA CUTTING EQUIPMENT FOR THE HYPER THERM® system POWERMAX® 125 (for OEM torch)	9
PLASMA CUTTING EQUIPMENT FOR THE HYPER THERM® system HSD130®	10
PLASMA CUTTING EQUIPMENT FOR THE HYPER THERM® system MAXPRO200®	11
PLASMA CUTTING EQUIPMENT FOR THE HYPER THERM® system HPR260®	12
PLASMA CUTTING EQUIPMENT FOR THE HYPER THERM® system HPR400XD®	13-15

INDEX - OTHER AVAILABLE SPARE PARTS FOR

PLASMA CUTTING EQUIPMENT FOR THE CEBORA® system CP161®
PLASMA CUTTING EQUIPMENT FOR THE CEBORA® system CP200®
PLASMA CUTTING EQUIPMENT FOR THE CEBORA® system CP251G®
PLASMA CUTTING EQUIPMENT FOR THE CEBORA® system CP450G®
PLASMA CUTTING EQUIPMENT FOR THE HYPER THERM® system MAX200, HT2000®
PLASMA CUTTING EQUIPMENT FOR THE HYPER THERM® system XPR170®
PLASMA CUTTING EQUIPMENT FOR THE HYPER THERM® system XPR300®
PLASMA CUTTING EQUIPMENT FOR THE KJELLBERG® system HiFokus 130i/160i/161i®
PLASMA CUTTING EQUIPMENT FOR THE KJELLBERG® system HiFokus Neo 161i/280i/360i/440i®
PLASMA CUTTING EQUIPMENT FOR THE KJELLBERG® system SmartFokus 130/170/200/300/400i®
PLASMA CUTTING EQUIPMENT FOR THE KJELLBERG® systém PB-S70W®
PLASMA CUTTING EQUIPMENT FOR THE KJELLBERG® systém FineFocus 800-900-1600®
PLASMA CUTTING EQUIPMENT FOR THE THERMAL DYNAMICS® system SL60-100®

THE TRADEMARKS INDICATED ARE THE PROPERTY OF THEIR LEGAL OWNERS. IPF INDUSTRY® IS NOT ASSOCIATED WITH THE COMPANIES. MOST IPF INDUSTRY® PARTS ARE MANUFACTURED BY IPF INDUSTRY OR ARE MANUFACTURED BY ONE OF THE IPF INDUSTRY GROUP COMPANIES. PARTS MARKED WITH THE ABBREVIATION OF OEM ARE ORIGINAL PARTS MANUFACTURED BY THE MANUFACTURERS LISTED ABOVE AND ARE RESELLED BY IPF INDUSTRY®. IN VALID FROM 1/6/2024. ANY PREVIOUS VERSION IS SUPERSEDES. © COPYRIGHT 2024 IPF INDUSTRY®. ALL RIGHTS RESERVED.

PLASMA CUTTING

REPLACEMENT PARTS SUITABLE FOR AJAN® PLASMA CUTTING SYSTEM

HP130®/HP260® 30-40-80-130-260A



ITEM	ORDER NUMBER	DESCRIPTION	PACK.	PRICE PER PIECE
	IPF.SC1	Shield cap 30-260A	1	
1	IPF.SC2	Shield cap 30-260A	1	
	IPF.S1	Shield 30A MS	1	
	IPF.S2	Shield 40A MS	1	
2	IPF.S3	Shield 80A/130A MS	1	
	IPF.S4	Shield 260A MS	1	
3	IPF.G1	Gas Ring 30-260A MS	1	
	IPF.G2	Gas Ring 30-260A SS/Al	1	
	IPF.N1	Nozzle 30A MS	1	
	IPF.N2	Nozzle 40A MS	1	
	IPF.N3	Nozzle 80A MS	1	
4	IPF.N5	Nozzle 130A MS	1	
	IPF.N7	Nozzle 260A MS	1	
5	IPF.SW1	Swirl ring 30A-80A MS	1	
	IPF.SW2	Swirl ring 130A MS	1	
	IPF.SW3	Swirl ring 260A MS	1	
	IPF.E0	Electrode 30-80A MS	1	
6	IPF.E1	Electrode 130A MS	1	
	IPF.E3	Electrode 260A MS	1	
	IPF.E0.SC	Electrode SC 30-80A MS	1	
	IPF.E1.SC	Electrode SC 130A MS	1	
	IPF.E3.SC	Electrode SC 260A MS	1	
	IPF.B1	Water Tube	1	

THE TRADEMARKS INDICATED ARE THE PROPERTY OF THEIR LEGAL OWNERS. IPF INDUSTRY® IS NOT ASSOCIATED WITH THE COMPANIES. MOST IPF INDUSTRY® PARTS ARE MANUFACTURED BY IPF INDUSTRY OR ARE MANUFACTURED BY ONE OF THE IPF INDUSTRY GROUP COMPANIES. PARTS MARKED WITH THE ABBREVIATION OF OEM ARE ORIGINAL PARTS MANUFACTURED BY THE MANUFACTURERS LISTED ABOVE AND ARE RESELLED BY IPF INDUSTRY®. IN VALID FROM 1/6/2024. ANY PREVIOUS VERSION IS SUPERSEDES. © COPYRIGHT 2024 IPF INDUSTRY®. ALL RIGHTS RESERVED.

PLASMA CUTTING

REPLACEMENT PARTS SUITABLE FOR ESAB® PLASMA CUTTING SYSTEM

PT-36™

ITEM:



ITEM	ORDER NUMBER	DESCRIPTION	PACK.	PRICE PER PIECE
1	IPF.37081	Shield cap 50-600A	1	
2	IPF.0558007624	Shield 2,4mm	1	
2	IPF.0558006130	Shield 3,0mm	1	
2	IPF.0558006141	Shield 4,1mm	1	
2	IPF.0558006166	Shield 6,6mm	1	
2	IPF.0558006199	Shield 9,9mm	1	
3	IPF.21944	Diffuser 50-600A	1	
4	IPF.37082	Retaining Cap 50-600A	1	
5	IPF.0558009406	Nozzle 0,6mm	1	
5	IPF.0558008010	Nozzle 1,0mm	1	
5	IPF.0558006010	Nozzle 1,0mm	1	
5	IPF.0558006014	Nozzle 1,4mm	1	
5	IPF.0558006018	Nozzle 1,8mm	1	
5	IPF.0558006020	Nozzle 2,0mm	1	
5	IPF.0558006023	Nozzle 2,3mm	1	
5	IPF.0558006025	Nozzle 2,5mm	1	
5	IPF.0558006030	Nozzle 3,0mm	1	
5	IPF.0558006036	Nozzle 3,6mm	1	
5	IPF.0558006041	Nozzle 4,1mm	1	
6	IPF.0558003914.SC	Electrode SC, O ₂	1	
7	IPF.0558003924	Electrode Holder	1	
8	IPF.0558002533	Swirl ring - 4 holes	1	
8	IPF.0558001625	Swirl ring - 8 holes	1	

THE TRADEMARKS INDICATED ARE THE PROPERTY OF THEIR LEGAL OWNERS. IPF INDUSTRY® IS NOT ASSOCIATED WITH THE COMPANIES. MOST IPF INDUSTRY® PARTS ARE MANUFACTURED BY IPF INDUSTRY OR ARE MANUFACTURED BY ONE OF THE IPF INDUSTRY GROUP COMPANIES. PARTS MARKED WITH THE ABBREVIATION OF OEM ARE ORIGINAL PARTS MANUFACTURED BY THE MANUFACTURERS LISTED ABOVE AND ARE RESELLED BY IPF INDUSTRY®. IN VALID FROM 1/6/2024. ANY PREVIOUS VERSION IS SUPERSEDES. © COPYRIGHT 2024 IPF INDUSTRY®. ALL RIGHTS RESERVED.

PLASMA CUTTING

REPLACEMENT PARTS SUITABLE FOR HYPERTHERM® PLASMA CUTTING SYSTEM

POWERMAX® 1000/POWERMAX® 1250/POWERMAX® 1650

ITEM:



ITEM	ORDER NUMBER	DESCRIPTION	PACK.	PRICE PER PIECE
1	IPF.120929	Shield Hand 40-80A	5	
	IPF.120930	Shield Machine 40-80A	5	
	IPF.220065	Shield Hand 100A	5	
	IPF.220047	Shield Machine 100A	5	
	IPF.120977	Shield Gouging 40-100A	5	
2	IPF.120928	Retaining Cap 40-80A	1	
	IPF.220061	Retaining Cap Ohmic 40-80A	1	
	IPF.220048	Retaining Cap 100A	1	
	IPF.220206	Retaining Cap Ohmic 100A	1	
	IPF.120932	Nozzle 40A	5	
	IPF.220006	Nozzle Extended 40A	5	
	IPF.220329	Nozzle FC 40A	5	
	IPF.120931	Nozzle 60A	5	
	IPF.220007	Nozzle Extended 60A	5	
3	IPF.120927	Nozzle 80A	5	
	IPF.220011	Nozzle 100A	5	
	IPF.220063	Nozzle Gouging 100A	5	
4	IPF.120926	Electrode 40-80A	5	
	IPF.120926.SC	Electrode SC 40-80A	5	
	IPF.220037	Electrode 100A	5	
	IPF.220037.SC	Electrode SC 100A	5	
5	IPF.120925	Swirl ring 80A (vespel)	1	
	IPF.220051	Swirl ring 100A (vespel)	1	

THE TRADEMARKS INDICATED ARE THE PROPERTY OF THEIR LEGAL OWNERS. IPF INDUSTRY® IS NOT ASSOCIATED WITH THE COMPANIES. MOST IPF INDUSTRY® PARTS ARE MANUFACTURED BY IPF INDUSTRY OR ARE MANUFACTURED BY ONE OF THE IPF INDUSTRY GROUP COMPANIES. PARTS MARKED WITH THE ABBREVIATION OF OEM ARE ORIGINAL PARTS MANUFACTURED BY THE MANUFACTURERS LISTED ABOVE AND ARE RESELLED BY IPF INDUSTRY®. IN VALID FROM 1/6/2024. ANY PREVIOUS VERSION IS SUPERSEDES. © COPYRIGHT 2024 IPF INDUSTRY®. ALL RIGHTS RESERVED.

PLASMA CUTTING

REPLACEMENT PARTS SUITABLE FOR HYPERTHERM® PLASMA CUTTING SYSTEM

POWERMAX® 45 , with Torches Duramax™

ITEM: 1.

2.

3.

4.

5.



ITEM	ORDER NUMBER	DESCRIPTION	PACK.	NETTO PRICE
1	IPF.220673	Shield Machine 45A	5	
	IPF.220674	Shield Hand 45A	5	
	IPF.220675	Shield Gouging 45A	5	
	IPF.220717	Deflector 45A	5	
2	IPF.220713	Retaining Cap 45A	1	
	IPF.220719	Retaining Cap Ohmic 45A	1	
3	IPF.220671	Nozzle 45A	5	
	IPF.220672	Nozzle Gouging 45A	5	
	IPF.220718	Nozzle Extended 45A	5	
4	IPF.220669	Electrode 45A	5	
	IPF.220669.SC	Electrode SC 45A	5	
5	IPF.220670	Swirl Ring 45A	1	
	IPF.228320	T45M Torch Main Body	1	

THE TRADEMARKS INDICATED ARE THE PROPERTY OF THEIR LEGAL OWNERS. IPF INDUSTRY® IS NOT ASSOCIATED WITH THE COMPANIES. MOST IPF INDUSTRY® PARTS ARE MANUFACTURED BY IPF INDUSTRY OR ARE MANUFACTURED BY ONE OF THE IPF INDUSTRY GROUP COMPANIES. PARTS MARKED WITH THE ABBREVIATION OF OEM ARE ORIGINAL PARTS MANUFACTURED BY THE MANUFACTURERS LISTED ABOVE AND ARE RESELLED BY IPF INDUSTRY®. IN VALID FROM 1/6/2024. ANY PREVIOUS VERSION IS SUPERSEDES. © COPYRIGHT 2024 IPF INDUSTRY®. ALL RIGHTS RESERVED.

PLASMA CUTTING

REPLACEMENT PARTS SUITABLE FOR HYPERTHERM® PLASMA CUTTING SYSTEM

POWERMAX® 65/POWERMAX® 85/POWERMAX® 105 , with Torches Duramax™

ITEM: 1. 2. 3. 4. 5.



ITEM	ORDER NUMBER	DESCRIPTION	PACK.	NETTO PRICE
1	IPF.220818	Shield Hand 45-65-85A	5	
	IPF.220992	Shield Hand 105A	5	
	IPF.220817	Shield Machine 45-65-85A	5	
	IPF.220993	Shield Machine 105A	5	
	IPF.220955	Deflector 45-65-85-105A	5	
	IPF.220798	Shield Gouging 45-65-85-105A	5	
	IPF.420480	Shield Gouging 45-65-85-105A	5	
	IPF.220931	Shield FC Hand 30-45A	5	
	IPF.220948	Shield FC Ohmic 30-45A	5	
2	IPF.220854	Retaining Cap 45-65-85-105A	1	
	IPF.220953	Retaining Cap Ohmic 45-65-85-105A	1	
	IPF.220941	Nozzle 45A	5	
3	IPF.220819	Nozzle 65A	5	
	IPF.220816	Nozzle 85A	5	
	IPF.220990	Nozzle 105A	5	
	IPF.220797	Nozzle Gouging 45-65-85A	5	
	IPF.220991	Nozzle Gouging 105A	5	
	IPF.220930	Nozzle FC 45A	5	
	4	IPF.220842	Electrode 45-65-85-105A (OEM Design)	5
IPF.220842.SC		Electrode SC 45-65-85-105A (OEM Design)	5	
IPF.220842.ID		Electrode 45-65-85-105A (IPF Design)	5	
IPF.220842.SC.ID		Electrode SC 45-65-85-105A (IPF Design)	5	
IPF.220777		Electrode 45-65-85-105A (OEM Design)	5	
IPF.220777.SC		Electrode SC 45-65-85-105A (OEM Design)	5	
5	IPF.220947	Swirl Ring 30-45A	1	
	IPF.220857	Swirl Ring 45-65-85A	1	
	IPF.220994	Swirl Ring 45-65-85-105A	1	
	IPF.228716	Machine Torch Main Body 180°	1	

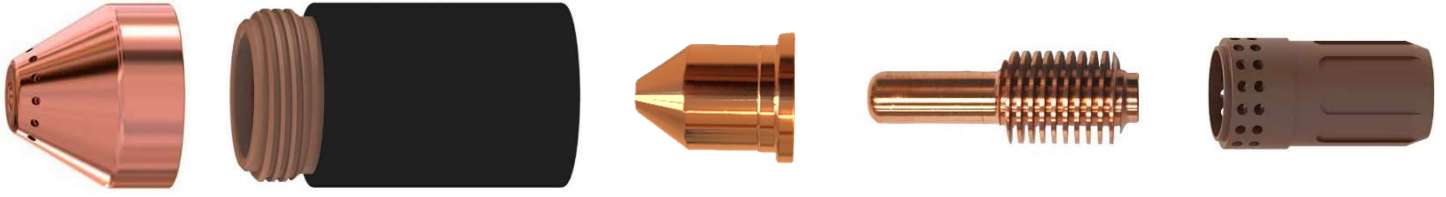
THE TRADEMARKS INDICATED ARE THE PROPERTY OF THEIR LEGAL OWNERS. IPF INDUSTRY® IS NOT ASSOCIATED WITH THE COMPANIES. MOST IPF INDUSTRY® PARTS ARE MANUFACTURED BY IPF INDUSTRY OR ARE MANUFACTURED BY ONE OF THE IPF INDUSTRY GROUP COMPANIES. PARTS MARKED WITH THE ABBREVIATION OF OEM ARE ORIGINAL PARTS MANUFACTURED BY THE MANUFACTURERS LISTED ABOVE AND ARE RESELLED BY IPF INDUSTRY®. IN VALID FROM 1/6/2024. ANY PREVIOUS VERSION IS SUPERSEDES. © COPYRIGHT 2024 IPF INDUSTRY®. ALL RIGHTS RESERVED.

PLASMA CUTTING

REPLACEMENT PARTS SUITABLE FOR HYPERTHERM® PLASMA CUTTING SYSTEM

POWERMAX® 65/POWERMAX® 85/POWERMAX® 105 with TECMO® Torches ECO and Hybrid

ITEM: 1. 2. 3. 4. 5.



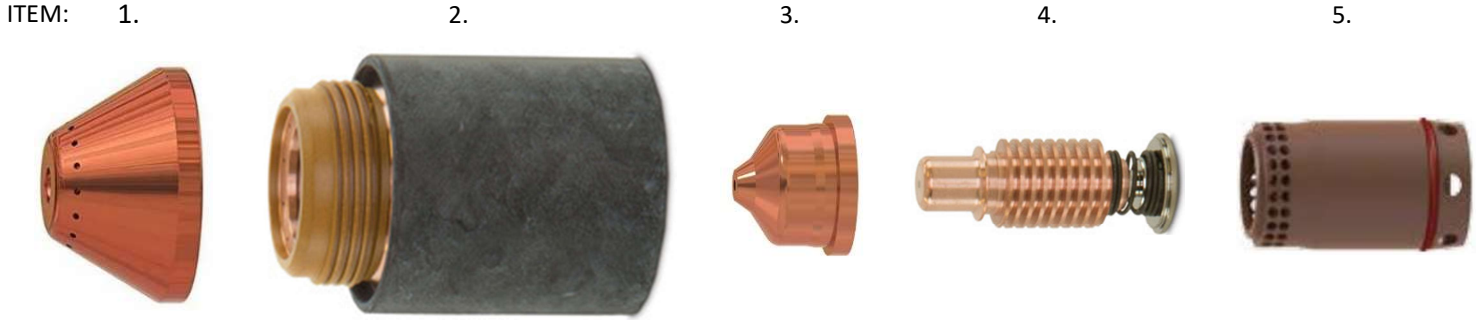
ITEM	ORDER NUMBER	DESCRIPTION	PACK.	NETTO PRICE
	IPF.220818.ID	Shield Hand 45-65-85A (IPF Design)	5	
	IPF.220992.ID	Shield Hand 105A (IPF Design)	5	
1	IPF.220817	Shield Machine 45-65-85A	5	
	IPF.220993	Shield Machine 105A	5	
	IPF.220955	Deflector 45-65-85-105A	5	
	IPF.220798	Shield Gouging 45-65-85-105A	5	
	IPF.420480	Shield Gouging 45-65-85-105A	5	
	IPF.220931	Shield FC Hand 30-45A	5	
	IPF.220948	Shield FC Ohmic 30-45A	5	
2	IPF.220854	Retaining Cap 45-65-85-105A	1	
	IPF.220953	Retaining Cap Ohmic 45-65-85-105A	1	
	IPF.220941.ID	Nozzle 45A (IPF Design)	5	
	IPF.220819.ID	Nozzle 65A (IPF Design)	5	
3	IPF.220816.ID	Nozzle 85A (IPF Design)	5	
	IPF.220990.ID	Nozzle 105A (IPF Design)	5	
	IPF.220797	Nozzle Gouging 45-65-85A	5	
	IPF.220991	Nozzle Gouging 105A	5	
	IPF.220930	Nozzle FC 45A	5	
4	IPF.220842.TD	Electrode 45-65-85-105A (without spring)	5	
	IPF.220842.SC.TD	Electrode SC 45-65-85-105A (without spring)	5	
	IPF.220777.TD	Electrode 45-65-85-105A (without spring)	5	
	IPF.220777.SC.TD	Electrode SC 45-65-85-105A (without spring)	5	
	IPF.220947	Swirl Ring 30-45A	1	
5	IPF.220857	Swirl Ring 45-65-85A	1	
	IPF.220994	Swirl Ring 45-65-85-105A	1	

THE TRADEMARKS INDICATED ARE THE PROPERTY OF THEIR LEGAL OWNERS. IPF INDUSTRY® IS NOT ASSOCIATED WITH THE COMPANIES. MOST IPF INDUSTRY® PARTS ARE MANUFACTURED BY IPF INDUSTRY OR ARE MANUFACTURED BY ONE OF THE IPF INDUSTRY GROUP COMPANIES. PARTS MARKED WITH THE ABBREVIATION OF OEM ARE ORIGINAL PARTS MANUFACTURED BY THE MANUFACTURERS LISTED ABOVE AND ARE RESELLED BY IPF INDUSTRY®. IN VALID FROM 1/6/2024. ANY PREVIOUS VERSION IS SUPERSEDES. © COPYRIGHT 2024 IPF INDUSTRY®. ALL RIGHTS RESERVED.

PLASMA CUTTING

REPLACEMENT PARTS SUITABLE FOR HYPERTHERM® PLASMA CUTTING SYSTEM

POWERMAX® 125 , with Torches Duramax Hyamp™



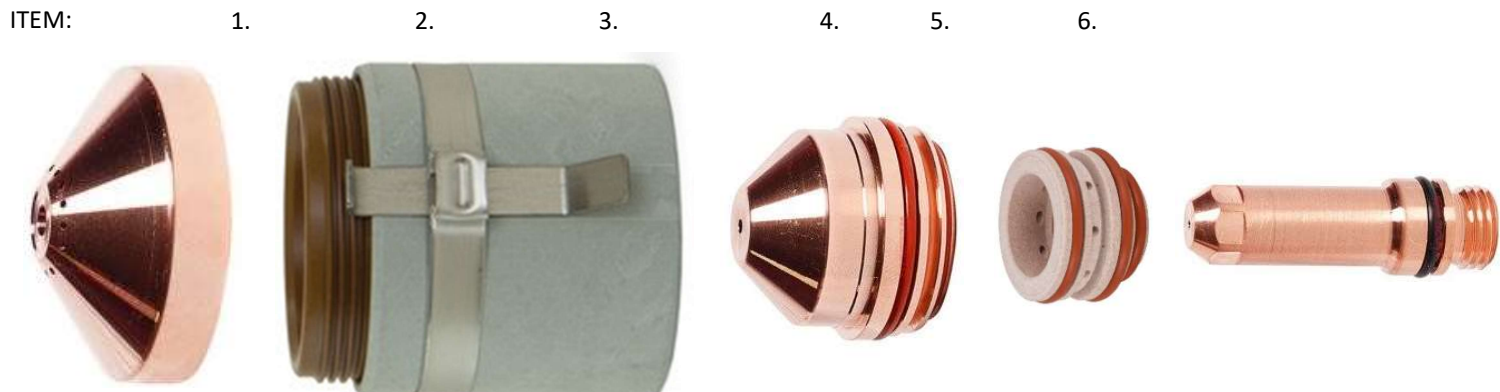
ITEM	ORDER NUMBER	DESCRIPTION	PACK.	NETTO PRICE
	IPF.420172	Shield Hand 45-65A	1	
	IPF.420000	Shield Hand 105-125A	1	
1	IPF.420168	Shield Machine 45-65A	1	
	IPF.220976	Shield Machine 105-125A	1	
	IPF.420152	Shield FC 30-45A	1	
	IPF.420112	Shield Gouging 125A	1	
	IPF.420509	Shield Gouging 125A	1	
2	IPF.220977	Retaining Cap 30-125A	1	
	IPF.420156	Retaining Cap Ohmic 30-125A	1	
	IPF.420158	Nozzle 45A	5	
3	IPF.420169	Nozzle 65A	5	
	IPF.220975	Nozzle 125A	5	
	IPF.420151	Nozzle FC 30-45A	5	
	IPF.420001	Nozzle Gouging 125A	5	
4	IPF.220971	Electrode 30-125A (OEM Design)	5	
	IPF.220971.SC	Electrode SC 30-125A (OEM Design)	5	
	IPF.220971.ID	Electrode 30-125A (IPF Design)	5	
	IPF.220971.SC.ID	Electrode SC 30-125A (IPF Design)	5	
5	IPF.220997	Swirl Ring 125A	1	
	IPF.420159	Swirl Ring FC 30-45A	1	

THE TRADEMARKS INDICATED ARE THE PROPERTY OF THEIR LEGAL OWNERS. IPF INDUSTRY® IS NOT ASSOCIATED WITH THE COMPANIES. MOST IPF INDUSTRY® PARTS ARE MANUFACTURED BY IPF INDUSTRY OR ARE MANUFACTURED BY ONE OF THE IPF INDUSTRY GROUP COMPANIES. PARTS MARKED WITH THE ABBREVIATION OF OEM ARE ORIGINAL PARTS MANUFACTURED BY THE MANUFACTURERS LISTED ABOVE AND ARE RESELLED BY IPF INDUSTRY®. IN VALID FROM 1/6/2024. ANY PREVIOUS VERSION IS SUPERSEDES. © COPYRIGHT 2024 IPF INDUSTRY®. ALL RIGHTS RESERVED.

PLASMA CUTTING

REPLACEMENT PARTS SUITABLE FOR HYPERTHERM® PLASMA CUTTING SYSTEM

HSD130® HySpeed® MILD STEEL 45-50-130A



ITEM	ORDER NUMBER	DESCRIPTION	PACK.	PRICE PER PIECE
	IPF.220532	Shield cap 45A Air/50A O ₂	1	
1	IPF.220536	Shield cap 130A Air	1	
	IPF.220491	Shield cap 130A O ₂	1	
2	IPF.220578	Retaining Cap 45-50-130A	1	
	IPF.220525	Nozzle 45A Air	1	
	IPF.220530	Nozzle 45A O ₂	1	
	IPF.220492	Nozzle 130A Air	1	
3	IPF.220489	Nozzle 130A O ₂	1	
	IPF.220529	Swirl Ring 45A Air/50A O ₂	1	
4	IPF.220488	Swirl Ring 130A Air/130A O ₂	1	
	IPF.220528	Electrode 45A Air/50A O ₂	5	
5	IPF.220487	Electrode 130A Air/130A O ₂	5	
	IPF.220528.SC	Electrode 45A Air/50A O ₂	5	
	IPF.220487.SC	Electrode 130A Air/130A O ₂	5	
	IPF.220521	Water Tube 45-50-130A	1	
	IPF.104119	Consumables removal tool	1	
	IPF.027055	Silikon lubrikant for o-ring 25ml	1	

THE TRADEMARKS INDICATED ARE THE PROPERTY OF THEIR LEGAL OWNERS. IPF INDUSTRY® IS NOT ASSOCIATED WITH THE HYPERTHERM® COMPANIES. MOST IPF INDUSTRY® PARTS ARE MANUFACTURED BY IPF INDUSTRY OR ARE MANUFACTURED BY ONE OF THE IPF GROUP COMPANIES. PARTS MARKED WITH THE ABBREVIATION OF OEM ARE ORIGINAL PARTS MANUFACTURED BY THE MANUFACTURERS LISTED ABOVE AND ARE RESELLED BY IPF INDUSTRY®. IN VALID FROM 1/1/2024. ANY PREVIOUS VERSION IS SUPERSEDES. © COPYRIGHT 2024 IPF INDUSTRY® CZECH REPUBLIC. ALL RIGHTS RESERVED.

PLASMA CUTTING

REPLACEMENT PARTS SUITABLE FOR HYPERTHERM® PLASMA CUTTING SYSTEM

MAXPRO200®/HyPro2000®



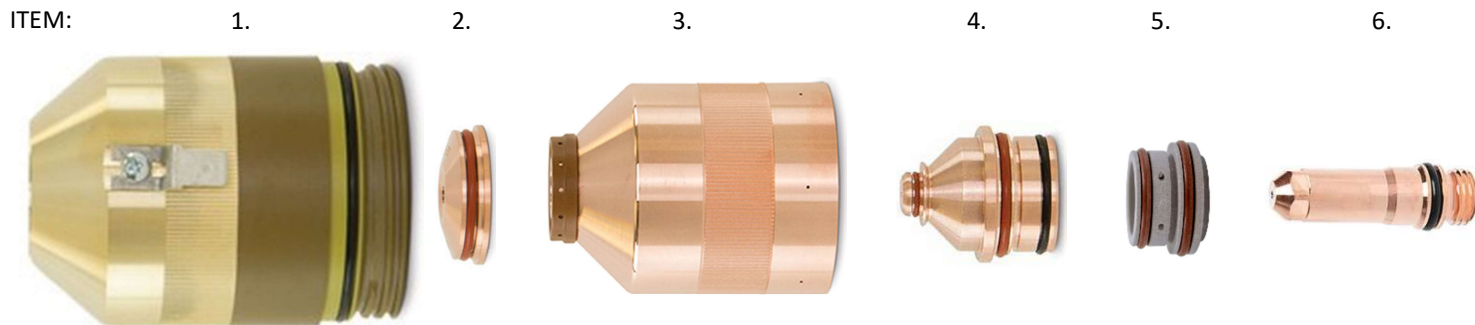
ITEM	ORDER NUMBER	DESCRIPTION	PACK.	NETTO PRICE
1	IPF.220532	Shield cap 50A Air/50A O ₂	1	
	IPF.220536	Shield cap 130A Air	1	
	IPF.220491	Shield cap 130A O ₂	1	
	IPF.420045	Shield cap 200A Air	1	
2	IPF.220832	Shield cap 200A O ₂	1	
	IPF.220935	Retaining Cap 50-130-200A	1	
3	IPF.220936	Retaining Cap Ohmic 50-130-200A	1	
	IPF.220890	Nozzle 50A Air	1	
	IPF.220892	Nozzle 130A Air	1	
	IPF.420044	Nozzle 200A Air	1	
	IPF.220891	Nozzle 50A O ₂	1	
	IPF.220893	Nozzle 130A O ₂	1	
	IPF.220831	Nozzle 200A O ₂	1	
	IPF.220529	Swirl Ring 50A Air/50A O ₂	1	
	IPF.220488	Swirl Ring 130A Air/130A O ₂	1	
	IPF.220834	Swirl Ring 200A Air/200A O ₂	1	
5	IPF.220528	Electrode 50A Air/50A O ₂	5	
	IPF.220487	Electrode 130A Air/130A O ₂	5	
	IPF.220937	Electrode 200A Air/200A O ₂	5	
	IPF.220528.SC	Electrode SC 50A Air/50A O ₂	5	
	IPF.220487.SC	Electrode SC 130A Air/130A O ₂	5	
	IPF.220937.SC	Electrode SC 200A Air/200A O ₂	5	
	IPF.220521	Water Tube 50-130-200A	1	
	IPF.220942	Torch Mounting Sleeve HyPro2000	1	
	IPF.220961	HyPro2000 Straight Torch	1	
	IPF.420087	MAXPRO2000 Straight Torch	1	
	IPF.104119	Consumables removal tool	1	

THE TRADEMARKS INDICATED ARE THE PROPERTY OF THEIR LEGAL OWNERS. IPF INDUSTRY® IS NOT ASSOCIATED WITH THE AJAN®, ESAB®, HYPERTHERM®, KJELLBERG®, CEBORA®, KALIBURN® COMPANIES. MOST IPF INDUSTRY® PARTS ARE MANUFACTURED BY IPF INDUSTRY OR ARE MANUFACTURED BY ONE OF THE IPF GROUP COMPANIES. PARTS MARKED WITH THE ABBREVIATION OF OEM ARE ORIGINAL PARTS MANUFACTURED BY THE MANUFACTURERS LISTED ABOVE AND ARE RESOLD BY IPF INDUSTRY®. EDITION 01 VALID FROM 11/2/2024. THIS DOCUMENT SUPERSEDES ALL PREVIOUS EDITIONS. © COPYRIGHT 2024 IPF INDUSTRY® CZECH REPUBLIC. ALL RIGHTS RESERVED.

PLASMA CUTTING

REPLACEMENT PARTS SUITABLE FOR HYPERTHERM® PLASMA CUTTING SYSTEM

HPR130®/HPR260® MILD STEEL 30-50-80-130-200-260A



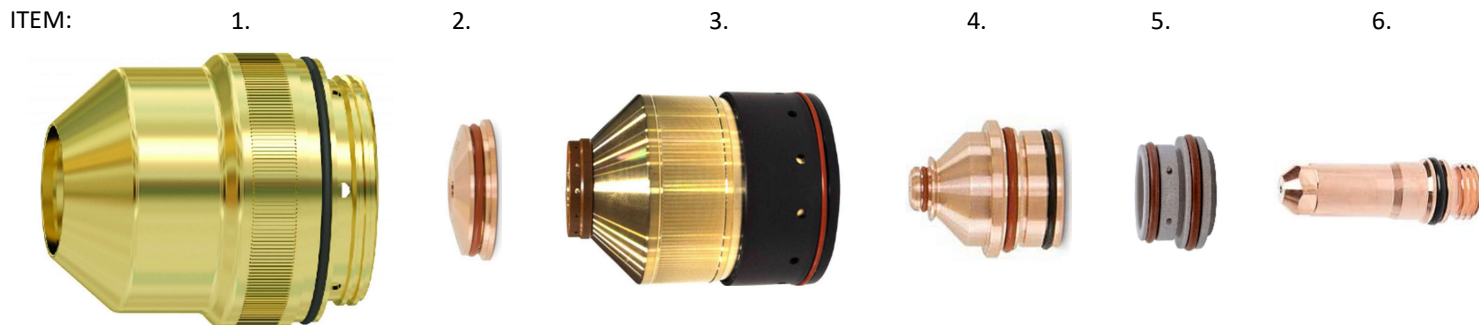
ITEM	ORDER NUMBER	DESCRIPTION	PACK.	PRICE PER PIECE
1	IPF.220173	Shield cap 30-130A	1	
	IPF.220398	Shield cap 200-260A	1	
	IPF.220194	Shield 30A MS	1	
	IPF.220555	Shield 50A MS	1	
	IPF.220189	Shield 80A MS	1	
2	IPF.220183	Shield 130A MS	1	
	IPF.220356	Shield 200A MS	1	
	IPF.220440	Shield 260A MS	1	
3	IPF.220313	Nozzle Retaining Cap 30A/50A MS	1	
	IPF.220176	Nozzle Retaining Cap 80A/130A MS	1	
	IPF.220355	Nozzle Retaining Cap 200A MS	1	
	IPF.220433	Nozzle Retaining Cap 260A MS	1	
4	IPF.220193	Nozzle 30A MS	1	
	IPF.220554	Nozzle 50A MS	1	
	IPF.220188	Nozzle 80A MS	1	
	IPF.220182	Nozzle 130A MS	1	
	IPF.220354	Nozzle 200A MS	1	
	IPF.220439	Nozzle 260A MS	1	
	IPF.220193.SG	Nozzle 30A MS SAVING GAS	1	
	IPF.220554.SG	Nozzle 50A MS SAVING GAS	1	
	IPF.220188.SG	Nozzle 80A MS SAVING GAS	1	
	IPF.220182.SG	Nozzle 130A MS SAVING GAS	1	
5	IPF.220354.SG	Nozzle 200A MS SAVING GAS	1	
	IPF.220439.SG	Nozzle 260A MS SAVING GAS	1	
	IPF.220180	Swirl ring 30A MS	1	
	IPF.220553	Swirl ring 50A MS	1	
	IPF.220179	Swirl ring 80/130A MS	1	
6	IPF.220353	Swirl ring 200A MS	1	
	IPF.220436	Swirl ring 260A MS	1	
	IPF.220192	Electrode 30A MS	5	
	IPF.220552	Electrode 50A MS	5	
	IPF.220187.SC	Electrode SC 80A MS	5	
	IPF.220182.SC	Electrode SC 130A MS	5	
	IPF.220352.SC	Electrode SC 200A MS	5	
	IPF.220435.SC	Electrode SC 260A MS	5	
	IPF.220340	Water tube 30-260A	1	
	IPF.220162	HyPerformance HPR torch	1	
IPF.220163	Quick-disconnect receptacle	1		
IPF.104119	Consumables removal tool	1		
IPF.027055	Silikon lubrikant for o-ring 25ml	1		

THE TRADEMARKS INDICATED ARE THE PROPERTY OF THEIR LEGAL OWNERS. IPF INDUSTRY® IS NOT ASSOCIATED WITH THE COMPANIES. MOST IPF INDUSTRY® PARTS ARE MANUFACTURED BY IPF INDUSTRY OR ARE MANUFACTURED BY ONE OF THE IPF INDUSTRY GROUP COMPANIES. PARTS MARKED WITH THE ABBREVIATION OF OEM ARE ORIGINAL PARTS MANUFACTURED BY THE MANUFACTURERS LISTED ABOVE AND ARE RESELLED BY IPF INDUSTRY®. IN VALID FROM 1/6/2024. ANY PREVIOUS VERSION IS SUPERSEDES. © COPYRIGHT 2024 IPF INDUSTRY®. ALL RIGHTS RESERVED.

PLASMA CUTTING

REPLACEMENT PARTS SUITABLE FOR HYPERTHERM® PLASMA CUTTING SYSTEM

HPR130XD®/HPR260XD®/HPR400XD®/HPR800XD® MILD STEEL 30-50-80-130A



ITEM	ORDER NUMBER	DESCRIPTION	PACK.	PRICE PER PIECE
1	IPF.220747	Shield cap 30-130A	1	
	IPF.220194	Shield 30A MS	1	
	IPF.220555	Shield 50A MS	1	
	IPF.220189	Shield 80A MS	1	
2	IPF.220183	Shield 130A MS	1	
	IPF.220742	Shield Bevel 80A/130A MS	1	
	IPF.220754	Nozzle Retaining Cap 30A/50A MS	1	
3	IPF.220756	Nozzle Retaining Cap 80A/130A MS	1	
	IPF.220845	Nozzle Retaining Cap Bevel 80A/200A MS	1	
	IPF.220740	Nozzle Retaining Cap Bevel 130A/260A MS	1	
	IPF.220193	Nozzle 30A MS	1	
4	IPF.220554	Nozzle 50A MS	1	
	IPF.220188	Nozzle 80A MS	1	
	IPF.220182	Nozzle 130A MS	1	
	IPF.220806	Nozzle Bevel 80A MS	1	
	IPF.220646	Nozzle Bevel 130A MS	1	
	IPF.220193.SG	Nozzle 30A MS SAVING GAS	1	
	IPF.220554.SG	Nozzle 50A MS SAVING GAS	1	
	IPF.220188.SG	Nozzle 80A MS SAVING GAS	1	
5	IPF.220182.SG	Nozzle 130A MS SAVING GAS	1	
	IPF.220180	Swirl ring 30A MS/45A SS	1	
	IPF.220553	Swirl ring 50A MS	1	
	IPF.220179	Swirl ring 80A MS/130A MS/80A SS/130A SS	1	
	IPF.220192	Electrode 30A MS	5	
6	IPF.220552	Electrode 50A MS	5	
	IPF.220187	Electrode 80A MS	5	
	IPF.220181	Electrode 130A MS	5	
	IPF.220192.SC	Electrode SC 30A MS	5	
	IPF.220552.SC	Electrode SC 50A MS	5	
	IPF.220187.SC	Electrode SC 80A MS	5	
	IPF.220181.SC	Electrode SC 130A MS	5	
	IPF.220802	Electrode Bevel 80A MS	5	
	IPF.220649	Electrode Bevel 130A MS	5	
	IPF.220340	Water tube 30-260A	1	
IPF.220700	Water tube Bevel 80-200A	1		
IPF.220705	Quick-disconnect receptacle	1		
IPF.220706	HyPerformance HPRXD torch	1		
IPF.104119	Consumables removal tool	1		
IPF.027055	Silikon lubrikant for o-ring 25ml	1		

THE TRADEMARKS INDICATED ARE THE PROPERTY OF THEIR LEGAL OWNERS. IPF INDUSTRY® IS NOT ASSOCIATED WITH THE COMPANIES. MOST IPF INDUSTRY® PARTS ARE MANUFACTURED BY IPF INDUSTRY OR ARE MANUFACTURED BY ONE OF THE IPF INDUSTRY GROUP COMPANIES. PARTS MARKED WITH THE ABBREVIATION OF OEM ARE ORIGINAL PARTS MANUFACTURED BY THE MANUFACTURERS LISTED ABOVE AND ARE RESELLED BY IPF INDUSTRY®. IN VALID FROM 1/6/2024. ANY PREVIOUS VERSION IS SUPERSEDES. © COPYRIGHT 2024 IPF INDUSTRY®. ALL RIGHTS RESERVED.

PLASMA CUTTING

REPLACEMENT PARTS SUITABLE FOR HYPERTHERM® PLASMA CUTTING SYSTEM

HPR260XD®/HPR400XD®/HPR800XD® MILD STEEL 200-260-400A



ITEM	ORDER NUMBER	DESCRIPTION	PACK.	PRICE PER PIECE
1	IPF.220637	Shield cap 200-260A	1	
2	IPF.220761	Shield 200A MS	1	
	IPF.220764	Shield 260A MS	1	
	IPF.220636	Shield 400A MS	1	
	IPF.220658	Shield Bevel 260A MS	1	
	IPF.220741	Shield Bevel 200A MS	1	
3	IPF.220757	Nozzle Retaining Cap 200A MS	1	
	IPF.220760	Nozzle Retaining Cap 260A MS	1	
	IPF.220635	Nozzle Retaining Cap 400A MS	1	
	IPF.220845	Nozzle Retaining Cap Bevel 80A/200A MS	1	
	IPF.220740	Nozzle Retaining Cap Bevel 130A/260A MS	1	
4	IPF.220354	Nozzle 200A MS	1	
	IPF.220439	Nozzle 260A MS	1	
	IPF.220632	Nozzle 400A MS	1	
	IPF.220659	Nozzle Bevel 200A MS	1	
	IPF.220542	Nozzle Bevel 260A MS	1	
	IPF.220354.SG	Nozzle 200A MS SAVING GAS	1	
	IPF.220439.SG	Nozzle 260A MS SAVING GAS	1	
	IPF.220632.SG	Nozzle 400A MS SAVING GAS	1	
5	IPF.220353	Swirl ring 200A MS	1	
	IPF.220436	Swirl ring 260A MS	1	
	IPF.220631	Swirl ring 400A MS	1	
6	IPF.220352	Electrode 200A MS	5	
	IPF.220435	Electrode 260A MS	5	
	IPF.220629	Electrode 400A MS	5	
	IPF.220662	Electrode Bevel 200A MS	5	
	IPF.220541	Electrode Bevel 260A MS	5	
	IPF.220352.SC	Electrode SC 200A MS	5	
	IPF.220435.SC	Electrode SC 260A MS	5	
	IPF.220629.SC	Electrode SC 400A MS	5	
	IPF.220662.SC	Electrode Bevel SC 200A MS	5	
	IPF.220541.SC	Electrode Bevel SC 260A MS	5	
	IPF.220340	Water tube 30-260A	1	
	IPF.220571	Water tube 400A/Bevel 200-260A	1	
	IPF.220700	Water tube Bevel 80-200A	1	
	IPF.220705	Quick-disconnect receptacle	1	
	IPF.220706	HyPerformance HPRXD torch	1	
	IPF.104119	Consumables removal tool	1	
	IPF.027055	Silikon lubrikant for o-ring 25ml	1	

THE TRADEMARKS INDICATED ARE THE PROPERTY OF THEIR LEGAL OWNERS. IPF INDUSTRY® IS NOT ASSOCIATED WITH THE COMPANIES. MOST IPF INDUSTRY® PARTS ARE MANUFACTURED BY IPF INDUSTRY OR ARE MANUFACTURED BY ONE OF THE IPF INDUSTRY GROUP COMPANIES. PARTS MARKED WITH THE ABBREVIATION OF OEM ARE ORIGINAL PARTS MANUFACTURED BY THE MANUFACTURERS LISTED ABOVE AND ARE RESELLED BY IPF INDUSTRY®. IN VALID FROM 1/6/2024. ANY PREVIOUS VERSION IS SUPERSEDES. © COPYRIGHT 2024 IPF INDUSTRY®. ALL RIGHTS RESERVED.

PLASMA CUTTING

REPLACEMENT PARTS SUITABLE FOR HYPERTHERM® PLASMA CUTTING SYSTEM

HPR130XD®/HPR260XD®/HPR400XD®/HPR800XD® STAINLESS STEEL/ALUMINIUM 45-80-130-200-260-400A



ITEM	ORDER NUMBER	DESCRIPTION	PACK.	PRICE PER PIECE
1	IPF.220747	Shield cap 30-130A	1	
	IPF.220637	Shield cap 200-260A	1	
	IPF.220202	Shield 45A SS/AL	1	
	IPF.220338	Shield 80A SS	1	
2	IPF.220198	Shield 130A SS/AL	1	
	IPF.220762	Shield 200A SS/AL	1	
	IPF.220763	Shield 260A SS/AL	1	
	IPF.220707	Shield 400A SS/AL	1	
	IPF.220738	Shield Bevel 130-260A SS/AL	1	
3	IPF.220755	Nozzle Retaining Cap 45-80-130A SS	1	
	IPF.220756	Nozzle Retaining Cap 45-130A SS/AL	1	
	IPF.220758	Nozzle Retaining Cap 200-260A SS/AL	1	
	IPF.220759	Nozzle Retaining Cap 200A AL	1	
	IPF.220712	Nozzle Retaining Cap 400A SS/AL	1	
	IPF.220201	Nozzle 45A SS/AL	1	
	IPF.220337	Nozzle 80A SS	1	
4	IPF.220197	Nozzle 130A SS/AL	1	
	IPF.220343	Nozzle 200A SS	1	
	IPF.220346	Nozzle 200A AL	1	
	IPF.220406	Nozzle 260A SS/AL	1	
	IPF.220708	Nozzle 400A SS/AL	1	
	IPF.220656	Nozzle Bevel 130A SS	1	
	IPF.220607	Nozzle Bevel 260A SS	1	
	IPF.220847	Nozzle HDi 60A SS	1	
	IPF.220180	Swirl ring 30A MS/45A SS	1	
5	IPF.220179	Swirl ring 80A MS/130A MS/80A SS/130A SS	1	
	IPF.220342	Swirl ring 200A SS/AL	1	
	IPF.220405	Swirl ring 200A SS/AL	1	
	IPF.220308	Electrode 45A SS/AL	5	
	IPF.220339	Electrode 80A SS/AL	5	
6	IPF.220307	Electrode 130-200-260A SS/AL	5	
	IPF.220709	Electrode 400A SS/AL	5	
	IPF.220606	Electrode Bevel 130-260A SS	5	
	IPF.220340	Water tube 30-260A	1	
	IPF.220571	Water tube 400A/Bevel 200-260A	1	
	IPF.220705	Quick-disconnect receptacle	1	
	IPF.220706	HyPerformance HPRXD torch	1	
	IPF.104119	Consumables removal tool	1	
	IPF.027055	Silikon lubrikant for o-ring 25ml	1	

THE TRADEMARKS INDICATED ARE THE PROPERTY OF THEIR LEGAL OWNERS. IPF INDUSTRY® IS NOT ASSOCIATED WITH THE COMPANIES. MOST IPF INDUSTRY® PARTS ARE MANUFACTURED BY IPF INDUSTRY OR ARE MANUFACTURED BY ONE OF THE IPF INDUSTRY GROUP COMPANIES. PARTS MARKED WITH THE ABBREVIATION OF OEM ARE ORIGINAL PARTS MANUFACTURED BY THE MANUFACTURERS LISTED ABOVE AND ARE RESELLED BY IPF INDUSTRY®. IN VALID FROM 1/6/2024. ANY PREVIOUS VERSION IS SUPERSEDES. © COPYRIGHT 2024 IPF INDUSTRY®. ALL RIGHTS RESERVED.